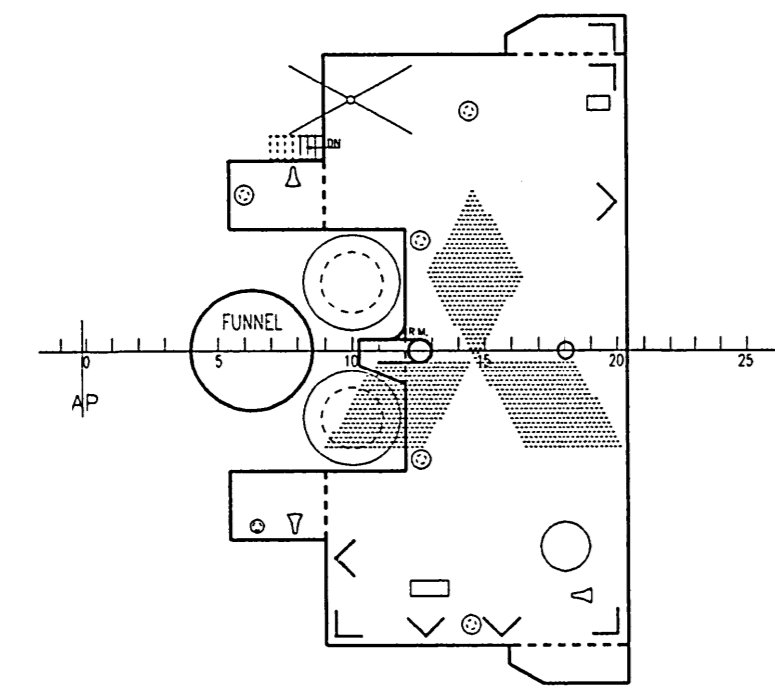


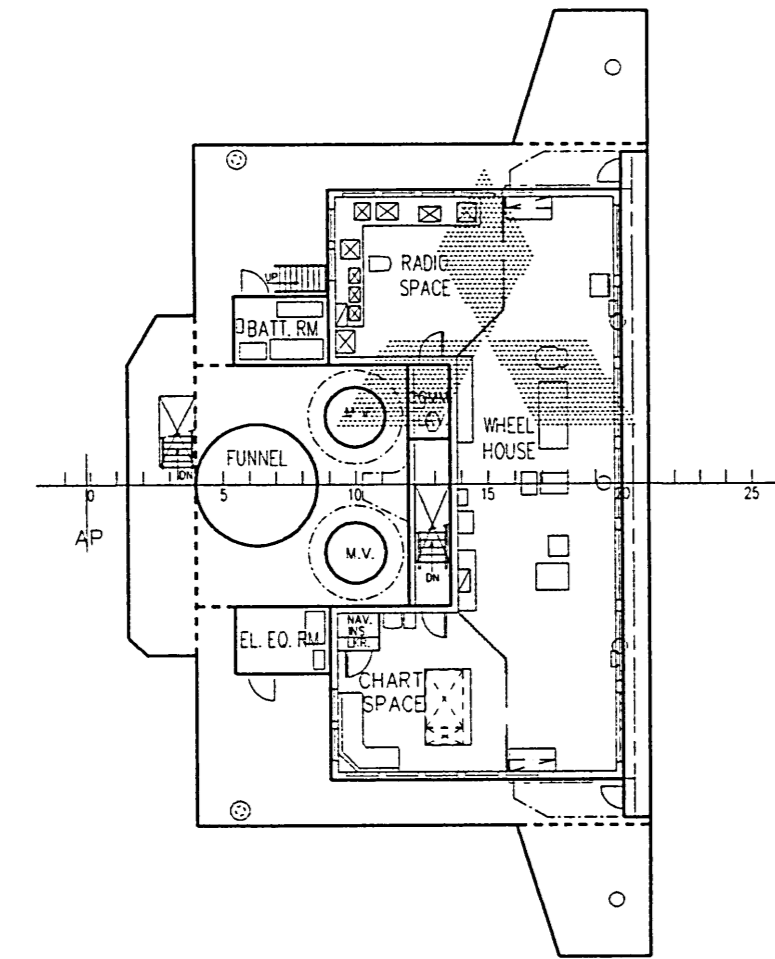
M.V. KAMA BHUM GENERAL ARRANGEMENT SCALE 1:200

VIEW OF BRIDGE FRONT AND HOLD SECTION

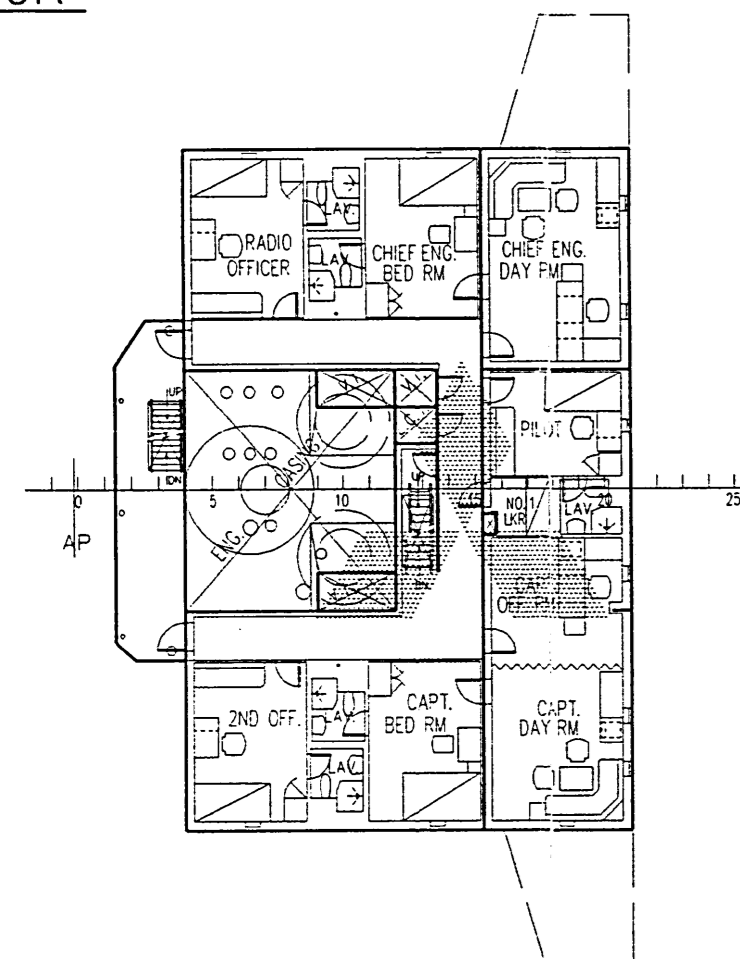
COMP. BRI. DECK



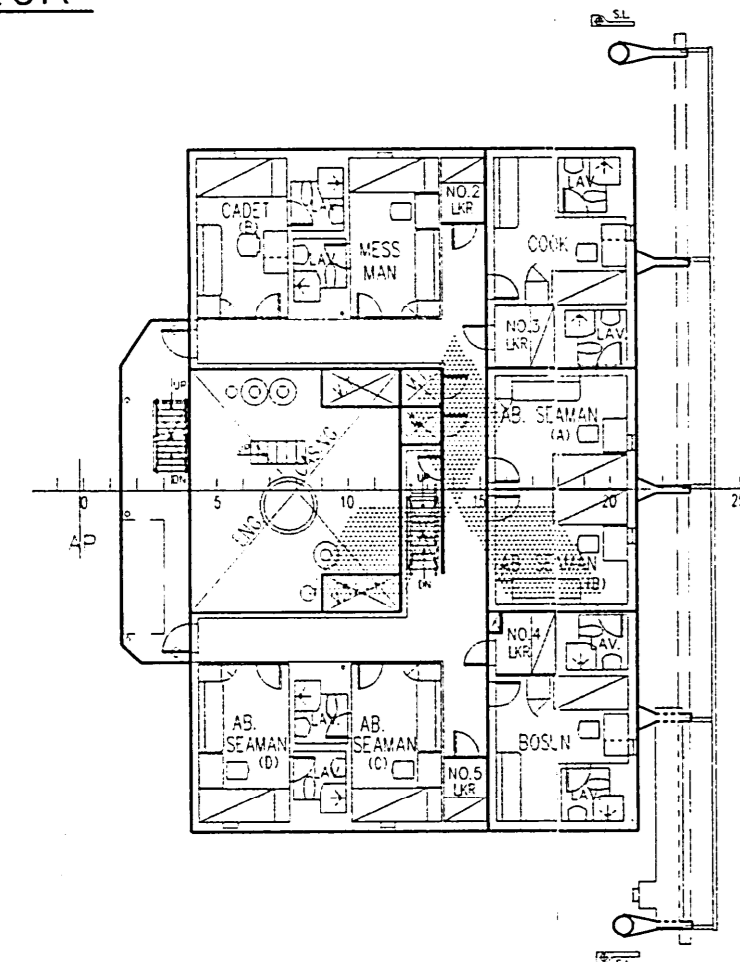
NAV. BRI. DECK



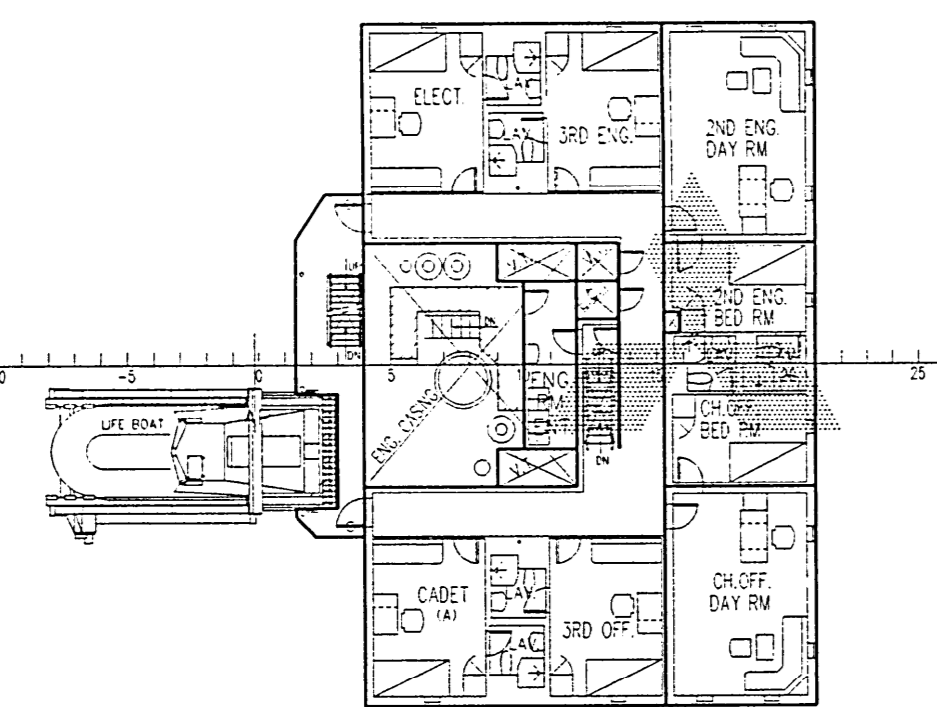
D DECK



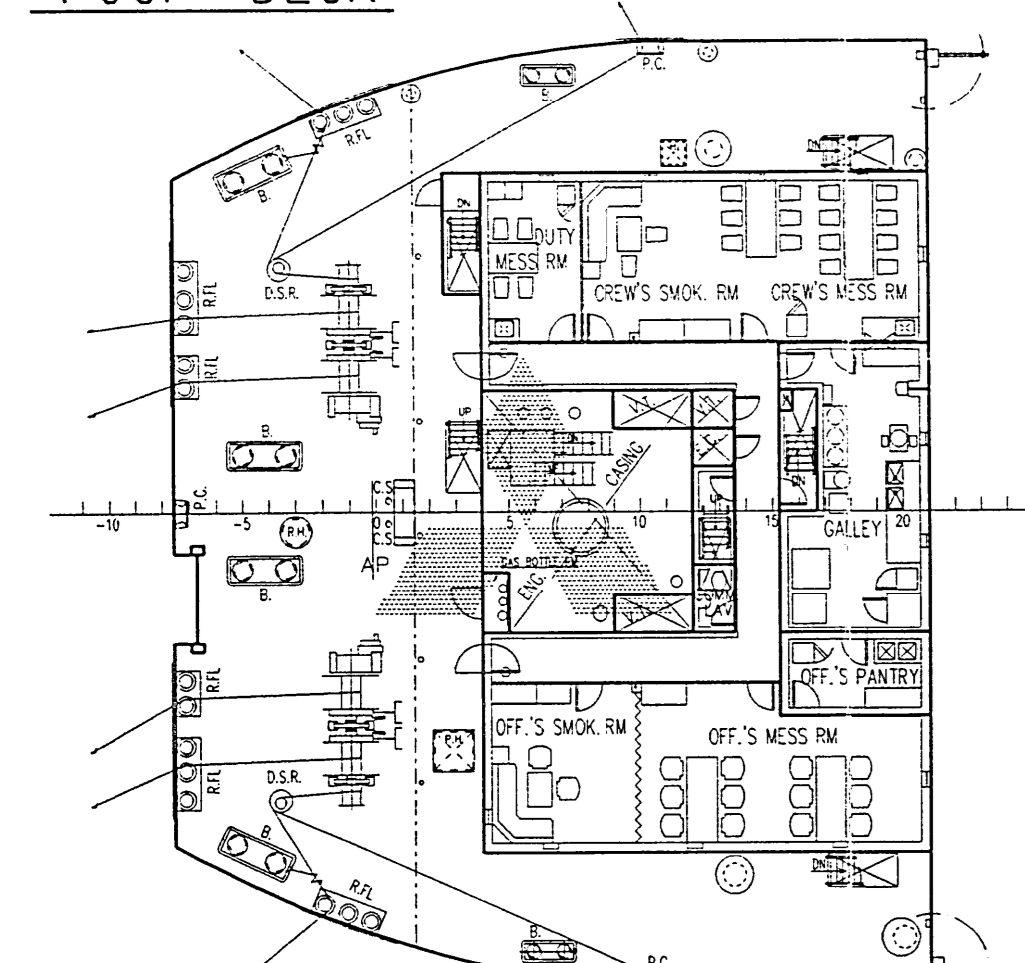
B DECK



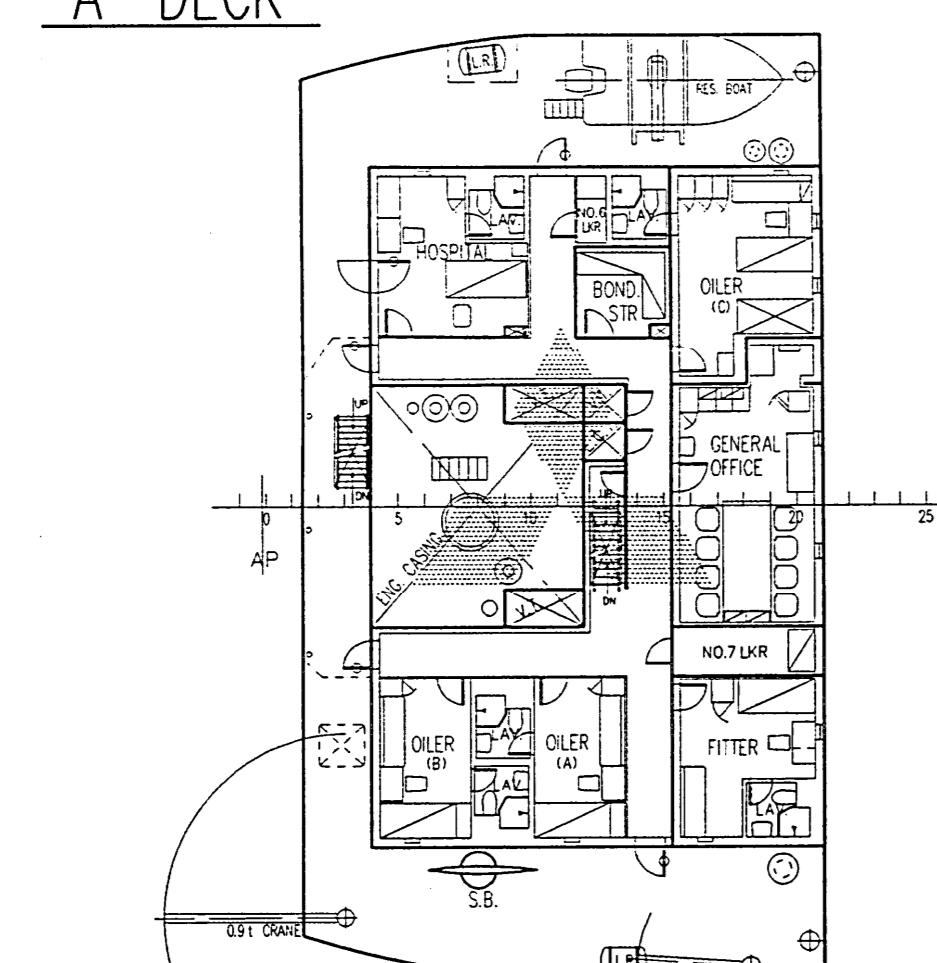
C DECK



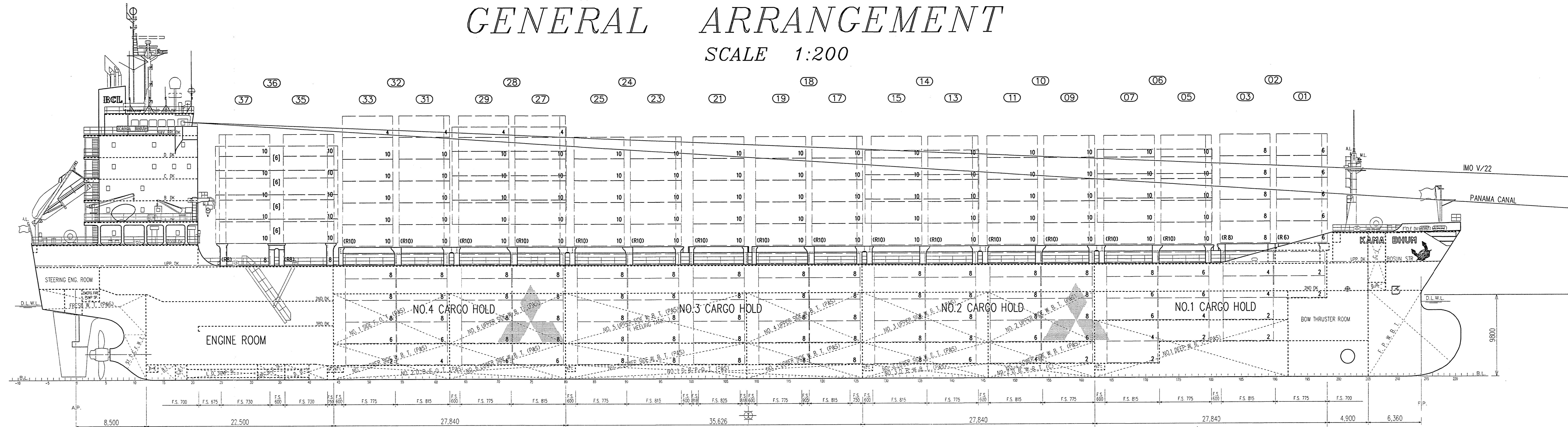
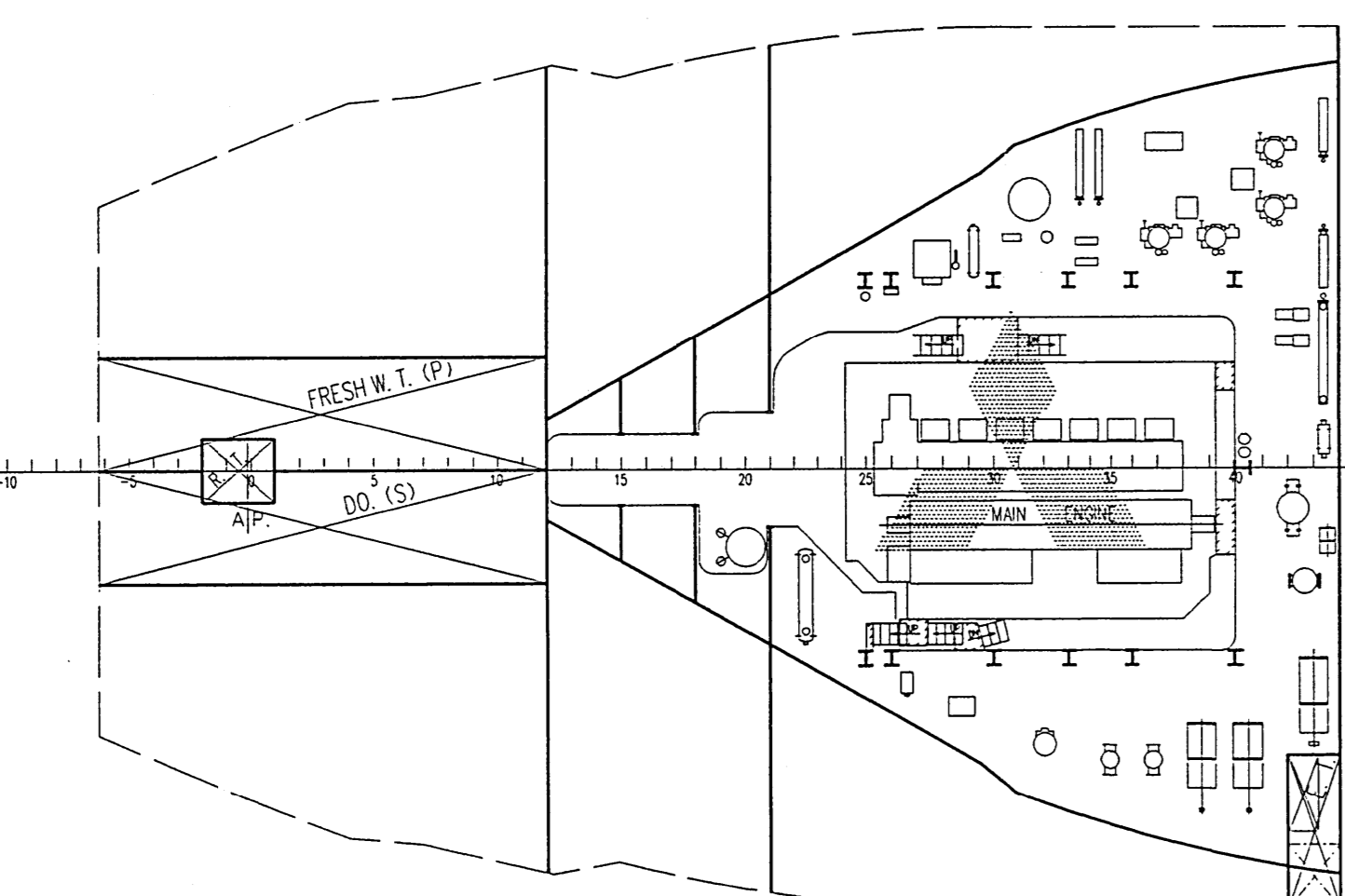
POOP DECK



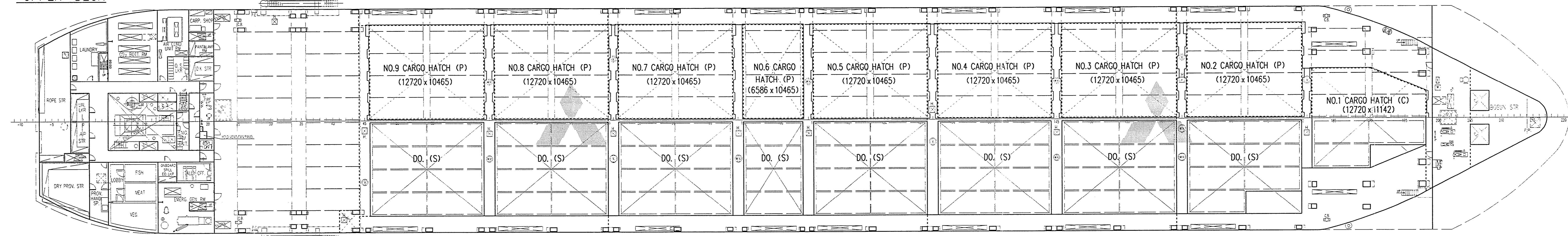
A DECK



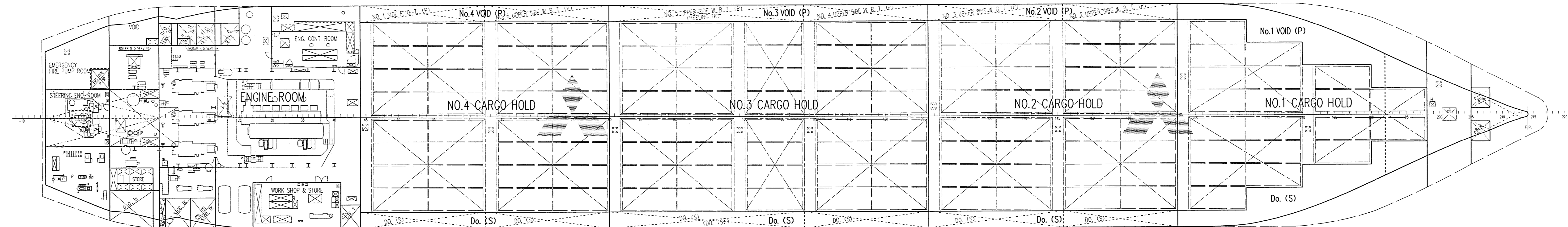
3RD DECK



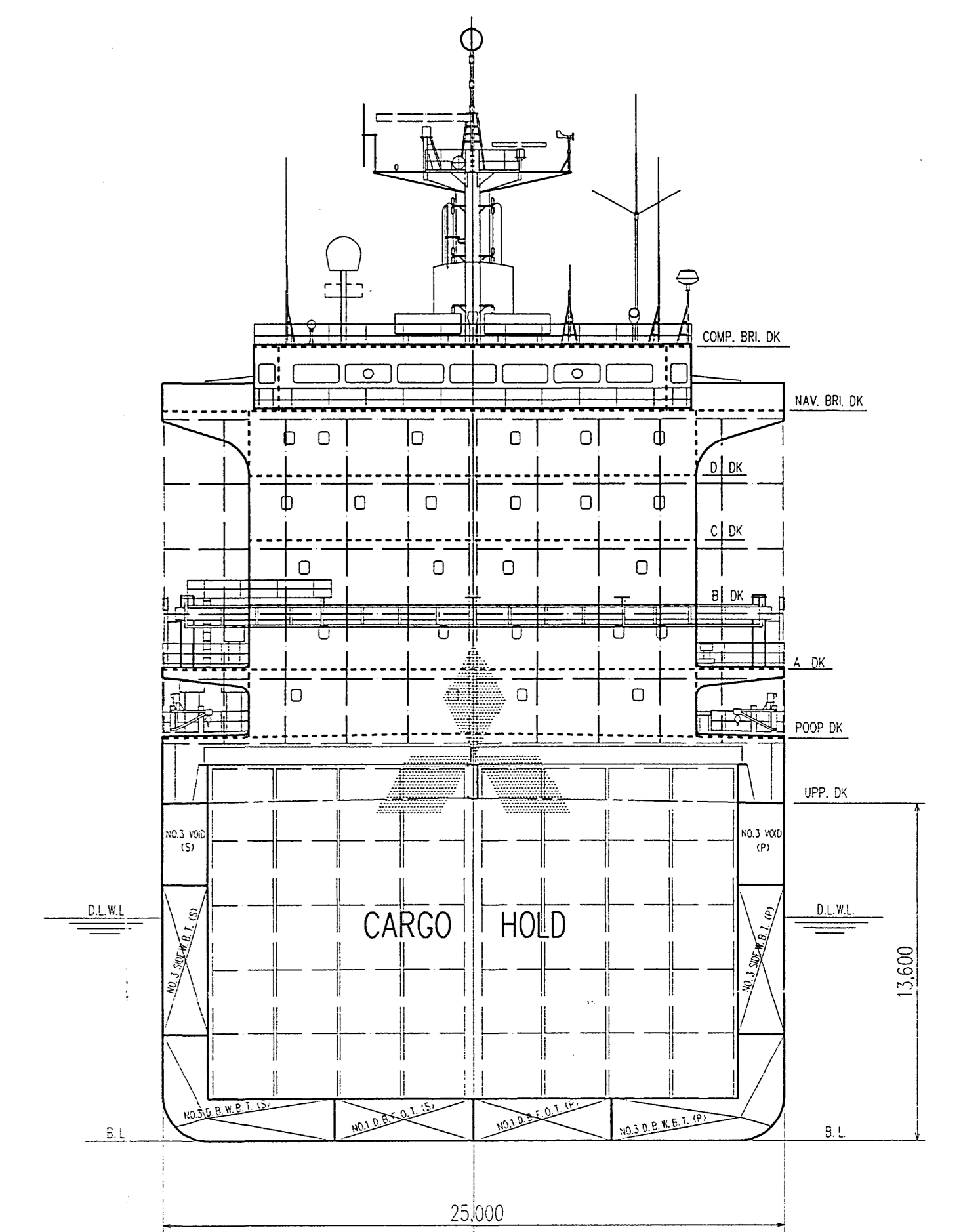
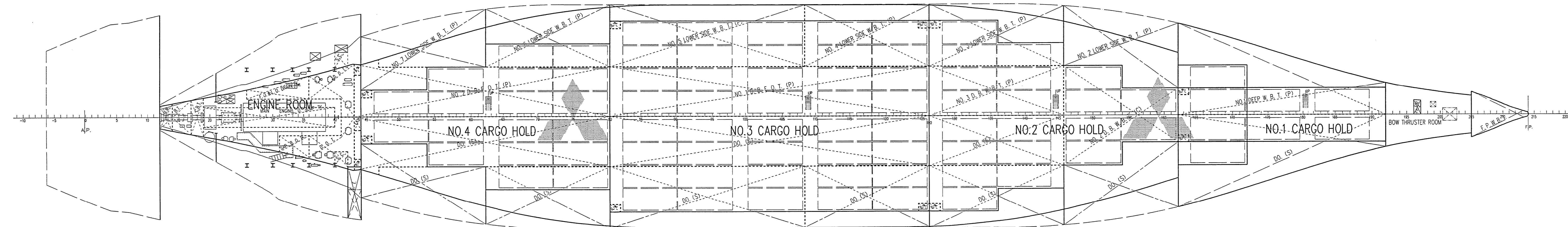
UPPER DECK



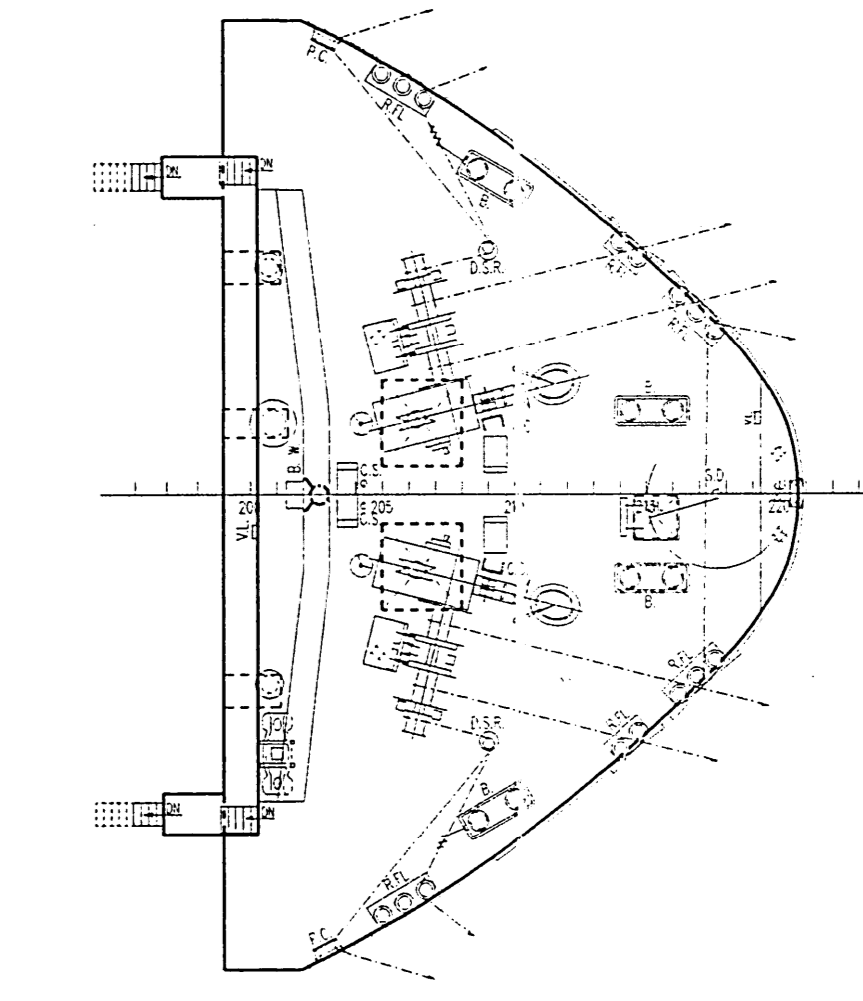
2ND DECK



TANK TOP



F'CLE DECK



| PRINCIPAL PARTICULARS | | COMPLEMENT | |
|----------------------------------|--|--------------------------|------------------------|
| LENGTH (O.A.) | 171.41 | DECK DEPT. | ENG. DEPT. |
| LENGTH (LBP) | 161.41 | CAPTAIN | 1 CHEF ENG. 1 |
| BREADTH (MID) | 25.00 | CHIEF OFF. | 1 2ND ENG. 1 |
| DEPTH (MID) | 13.60 | 2ND OFF. | 1 3RD ENG. 1 |
| DESIGNED DRAUGHT (MID) | 9.00 | 3RD OFF. | 1 RADIO OFF. 1 |
| ASSIGNED SUMMER DRAUGHT (MID) | 9.80 | CABET | 1 2 ELECTRICIAN |
| | | | 6 5 |
| DEADWEIGHT (D=9.00P) | 18,873 | BOSUN | 1 FITTER 1 CHEF COOK 1 |
| DEADWEIGHT (D=9.80P) | 21,853 | AB. SEAMAN | 4 OILER 2 MASS MAN 1 |
| GROSS TONNAGE | 15,533 | | |
| NO. OF CONTAINERS | TOTAL 1,498 RU | | |
| | (ON DECK 952 RU, IN HOLD 546 RU) | | |
| MAIN ENGINE | M.A.N. B&W 7 L 6.0 M C (Derated) - 1 SET | | |
| M.S. (GWP) | 12,280 m ³ x 123 TON | | |
| SERVICE SPEED | 18.8 KNOTS | TOTAL NO. OF OFFICER | 11 P |
| | | TOTAL NO. OF RATING CREW | 77 P |
| TWEEN DECK HEIGHT | | | |
| UPPER DECK - F'CLE DECK | 3.60 m | | |
| UPPER DECK - POOP DECK | 2.60 m | | |
| POOP DECK - A DECK | 2.60 m | | |
| A DECK - B DECK | 2.60 m | | |
| B DECK - C DECK | 2.60 m | | |
| C DECK - D DECK | 2.60 m | | |
| D DECK - NAV. BRI. DECK | 2.60 m | | |
| NAV. BRI. DECK - COMP. BRI. DECK | 2.60 m | | |
| DECK CAMBER | | | |
| UPPER DECK & F'CLE DECK | 200 mm | | |
| POOP DECK | 200 mm | | |
| A DECK & ABOVE | NE | | |

PROJECT MANAGER
Shigenori

SHIP & OCEAN DEPT.
INITIAL DESIGNING & ESTIMATE SECT.

APPROVED: *[Signature]* DATE: CL
CHECKED: *[Signature]*
DRAWN: *[Signature]*

REGIONAL CONTAINER LINES (PTE) LTD. KAMA BHUM
GENERAL ARRANGEMENT

NO. N1026
DRAWING NO. SO-20100

MITSUBISHI HEAVY INDUSTRIES, LTD.
SHIMONOSEKI SHIPYARD & MACHINERY WORKS

DATE: 9/2/11

This drawing or document is the property of the M.I.L. and is not to be reproduced, copied, or used for furnishing information to others or for any other purpose detrimental to the interests of the M.I.L. except by written permission of the M.I.L.