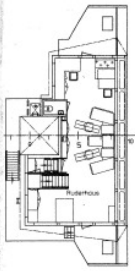


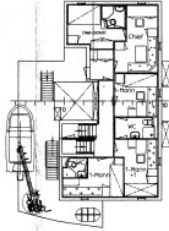
Brückendeck



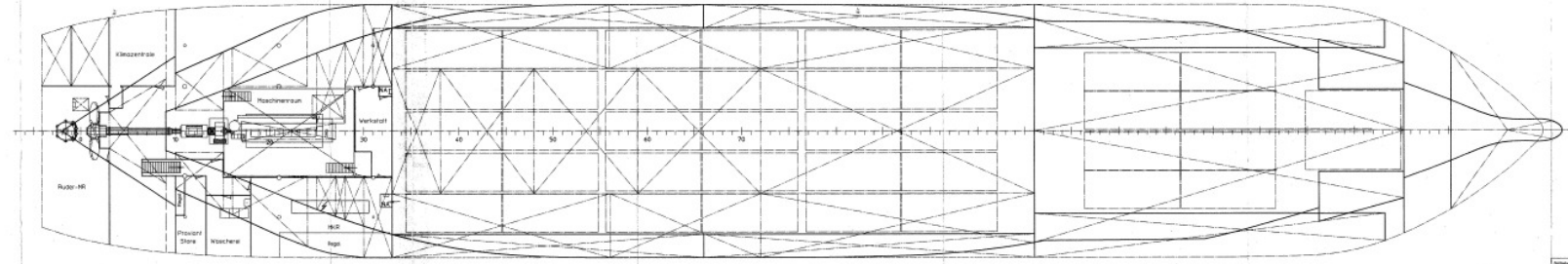
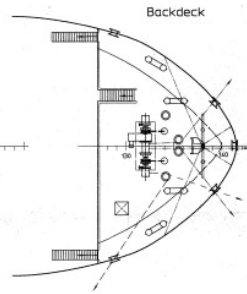
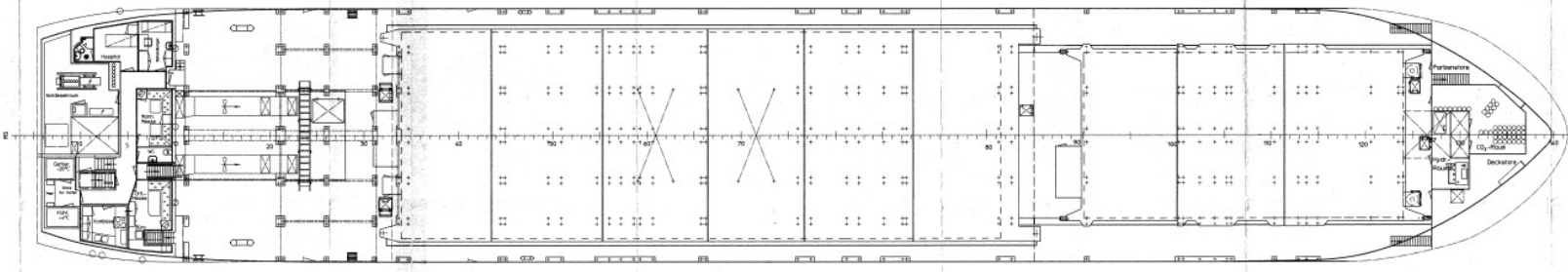
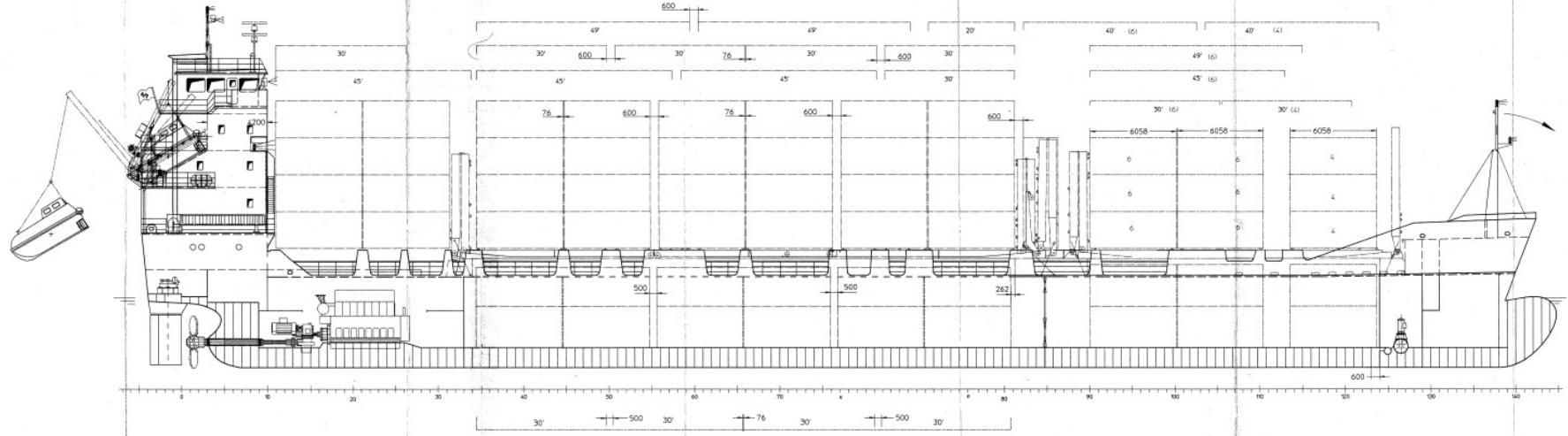
2.Deck



1.Deck



Poopdeck



Länge ü.a.	97,83 m (99,30 m)
Länge zw.d.L.	93,95 m
Breite	16,20 m
Breite ü.a.	16,44 m
Seitenhöhe	6,40 m
Tiefgang	ca. 4,90 m
Tragfähigkeit	3950 t/dw
Container	20' 40'
in Raun	82 38
an Deck	258 128

Bauprojekt		Baujahr		Baustelle	
BN229 MHB		1973		Ebn 300340	
Projektant		Ausführer		Genehmiger	
E. W.	
225-100.01		Generalplan		225-100.01	